

Relocation of Heathrow Express depot to Langley

June 2015

Who we are

- [REDACTED] – Project Manager, Network Rail
- [REDACTED] – Environment Manager,
HS2 Ltd
- [REDACTED] – HS2 Sponsor Team, DfT
- [REDACTED] – Project Sponsor Team, Network Rail
- [REDACTED] – Engagement Development Manager,
HS2 Ltd
- [REDACTED] – Town Planning Manager
Route-wide, HS2 Ltd

Agenda

- About HS2
- Rationale for Langley (DFT)
- What we are proposing there (NR/HS2)
- Interaction with WRLtH (NR/HS2)
- What assessments we will be doing (HS2)
- Other things we are assessing (HS2)
- Proposed lorry routes (HS2)
- Parliamentary process (HS2)
- The hybrid Bill (HS2)
- Engagement events (HS2)
- Your questions

Overview of HS2

- HS2 will be 351 miles of new track – the first new railway north of London for over 120 years.
- Construction is expected to begin in 2017
 - Phase One is scheduled to open in 2026; and
 - Phase Two in 2033

Adding connectivity and capacity

Phase One

Stations:

- Euston
- Old Oak Common
- Birmingham
- Interchange
- Birmingham Curzon Street
- Street



Phase Two

Stations:

- East Midlands Hub
- Sheffield
- Leeds
- Manchester
- Piccadilly
- Manchester Airport

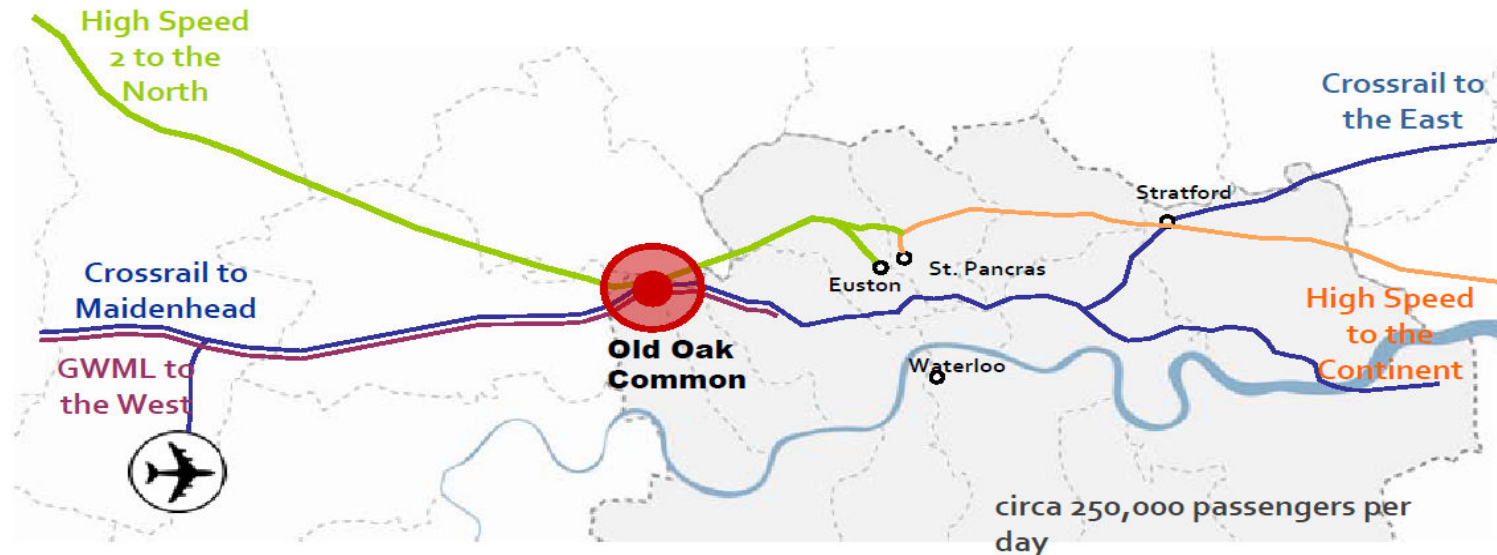


HS2's vision for Old Oak Common

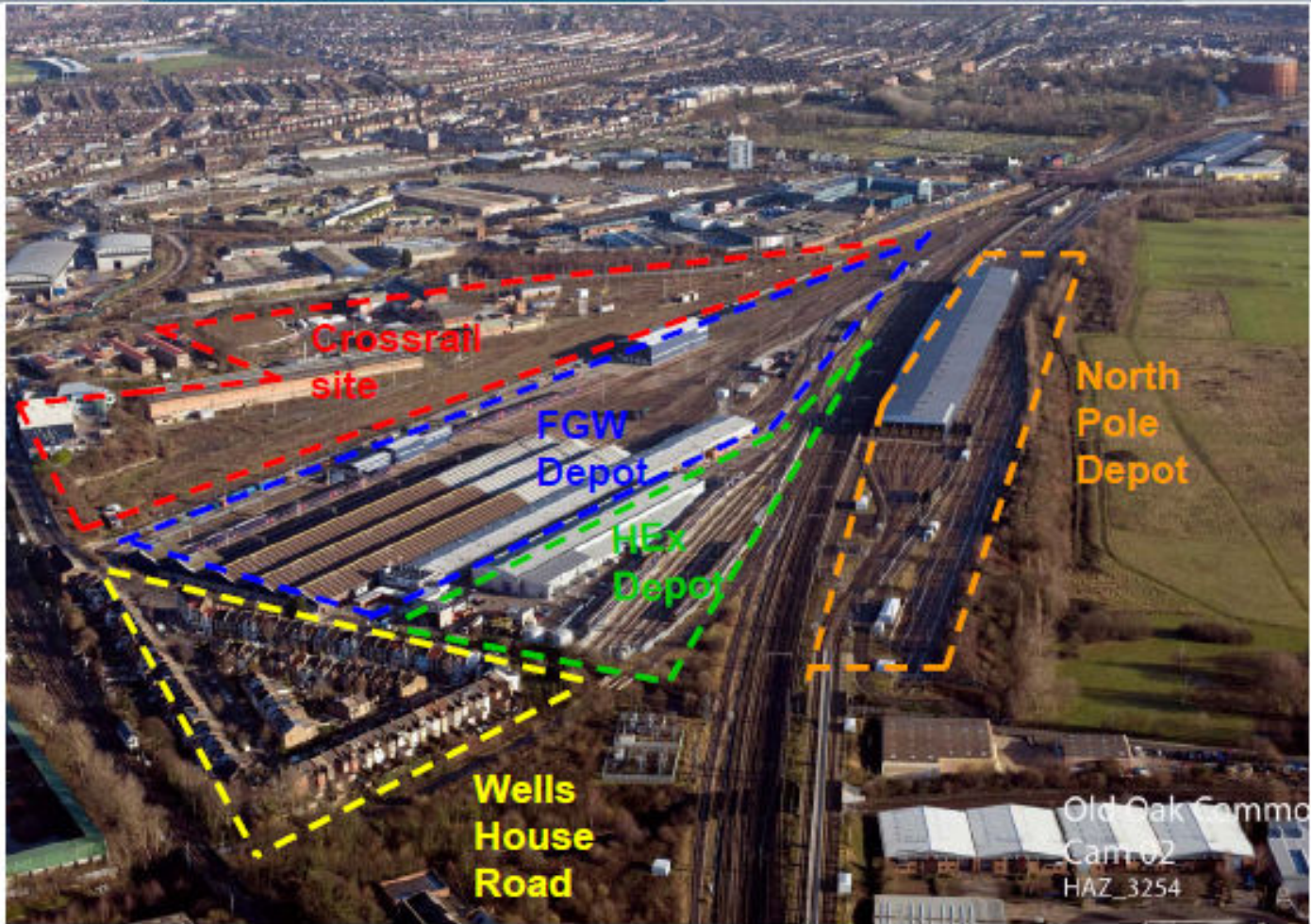


HS2 Old Oak Common – Station interchange and connectivity

- New interchange opportunities – HS2 to the north, Great Western Main line services to the west (including Slough)
- Crossrail services across London and Hex services to the airport
- 45 mins to Birmingham and 20 mins to Canary Wharf (via Crossrail)



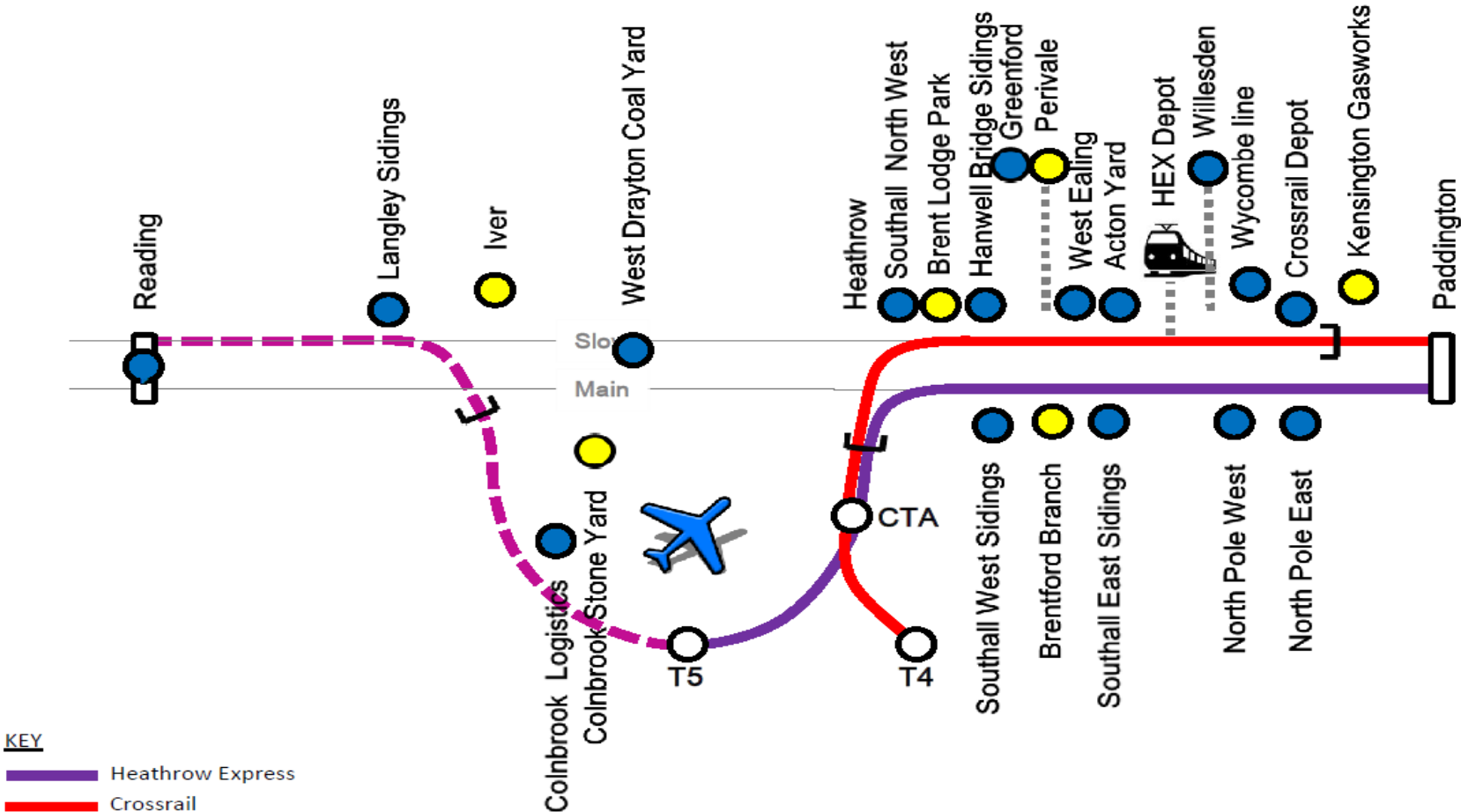
HEx and FGW depots relocation



HEx depot relocation

- HEx depot needs to be relocated to accommodate HS2 works at Old Oak Common / GWML
- HS2 works start post-Royal Assent – currently planned for end of 2016
- HEx off-site by December 2019
- Network Rail (NR) remitted to identify sites
- Long list of sites considered
- Assessment identified Langley as optimum location

HEX and FGW depots relocation sites considered

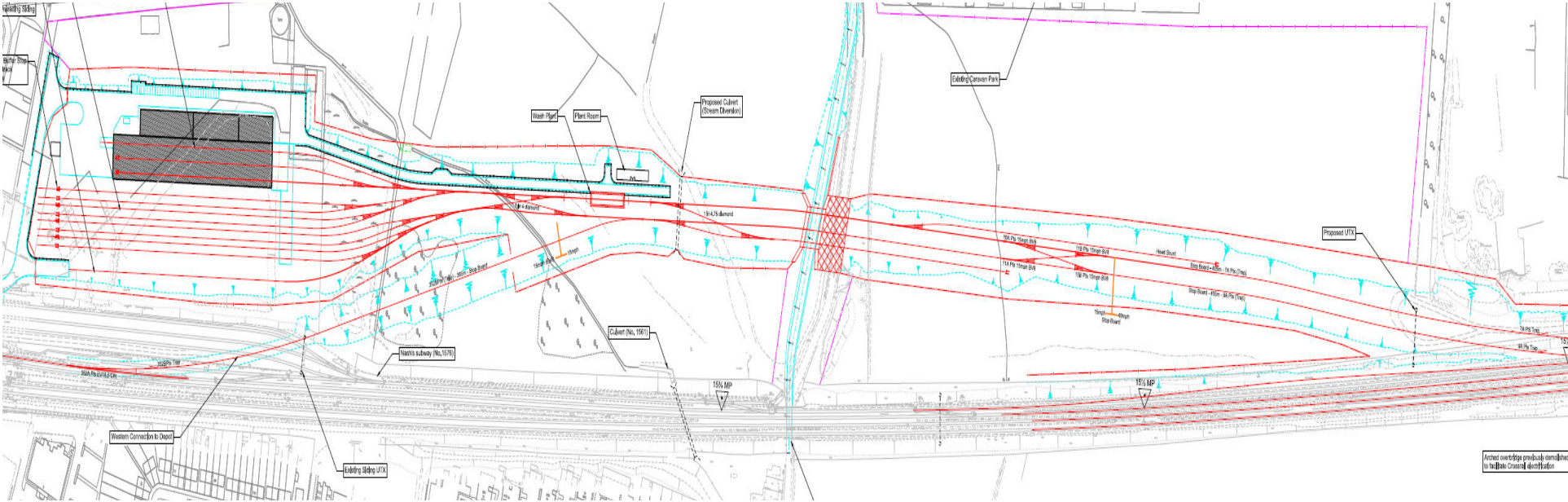


HEx depots relocation site selection process

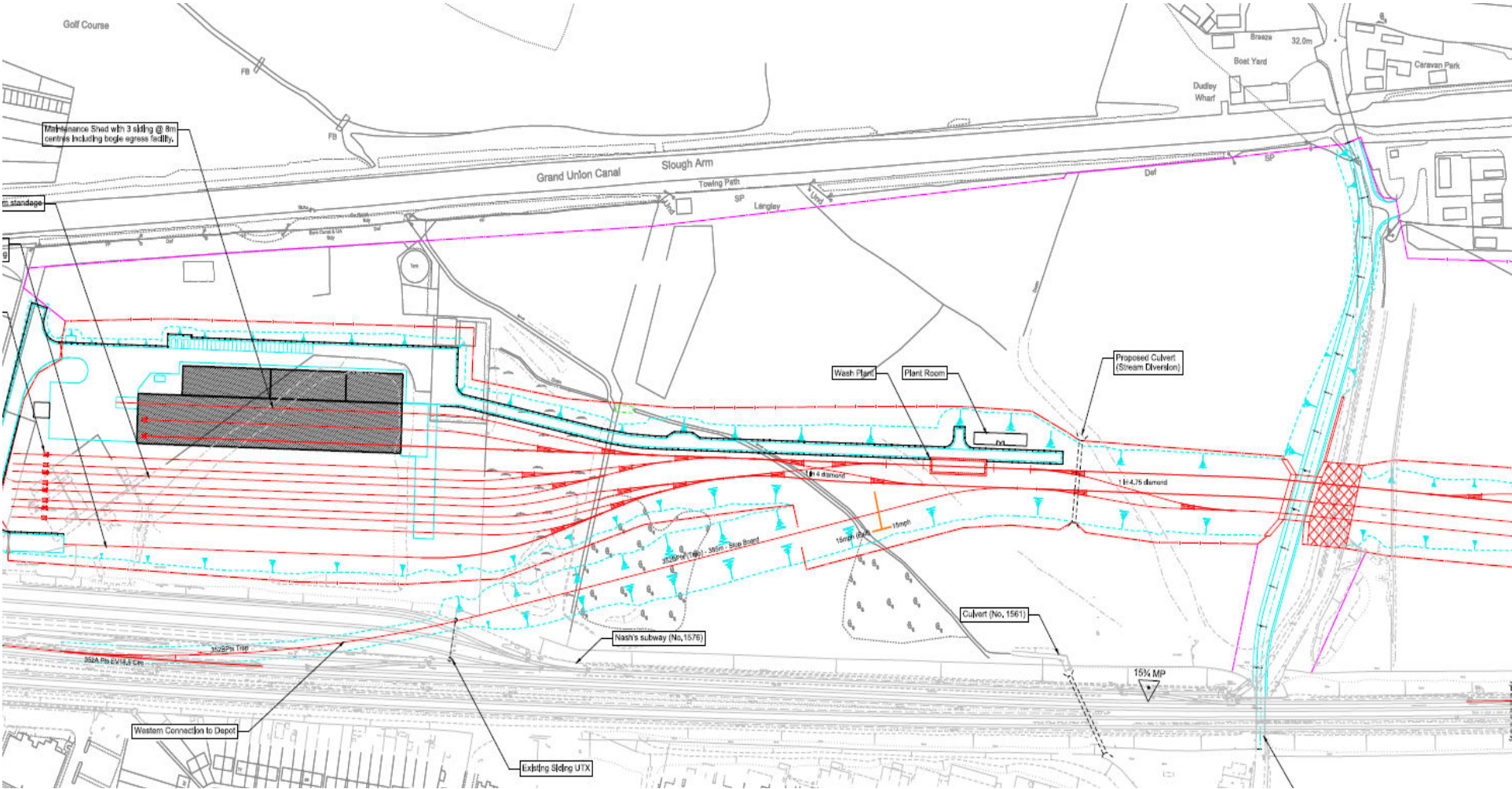
NR site selection primarily considers:

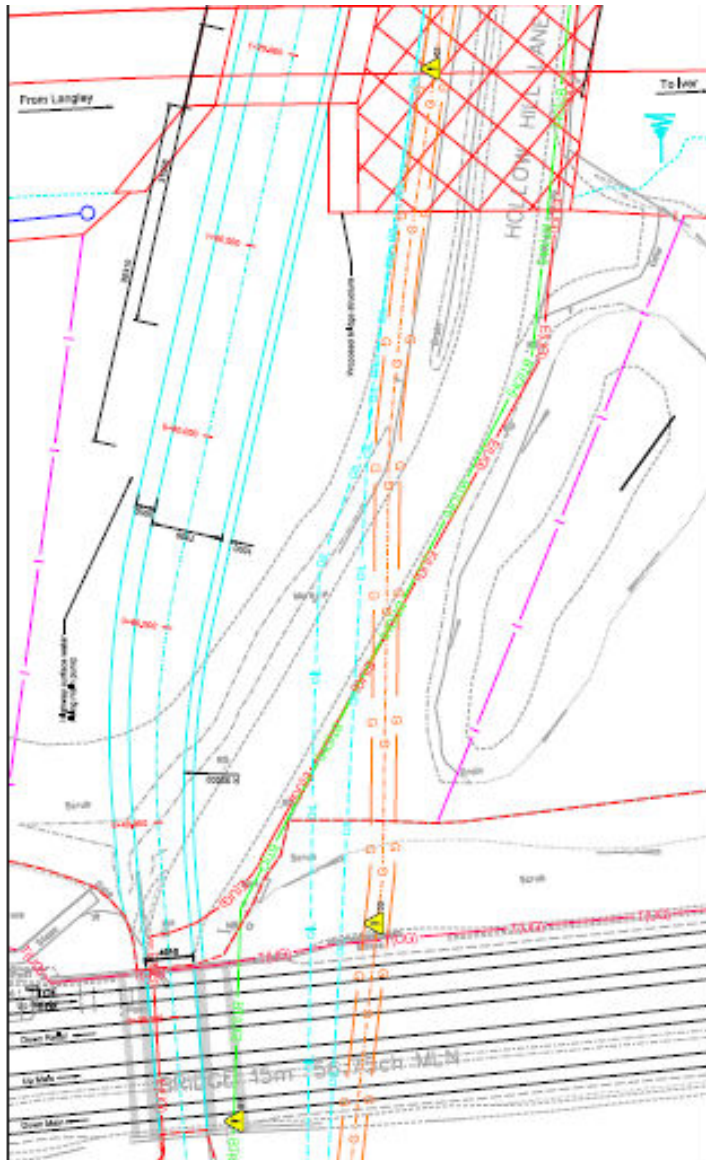
- Network operability, reliability and performance
- Cost
- Vehicular accessibility
- Staff accessibility
- Land acquisition and planning consents
- Environmental considerations
- Safety
- Maintainability and constructability

Overall depot layout

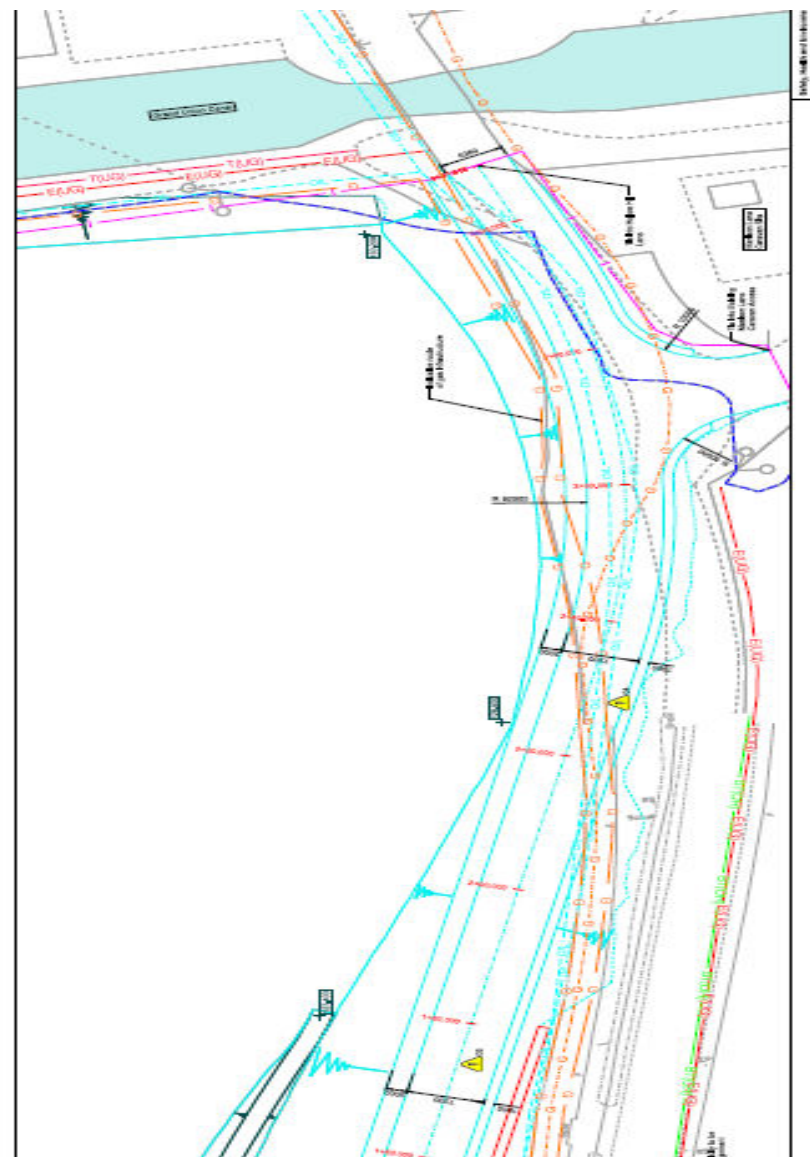


Depot layout within Slough



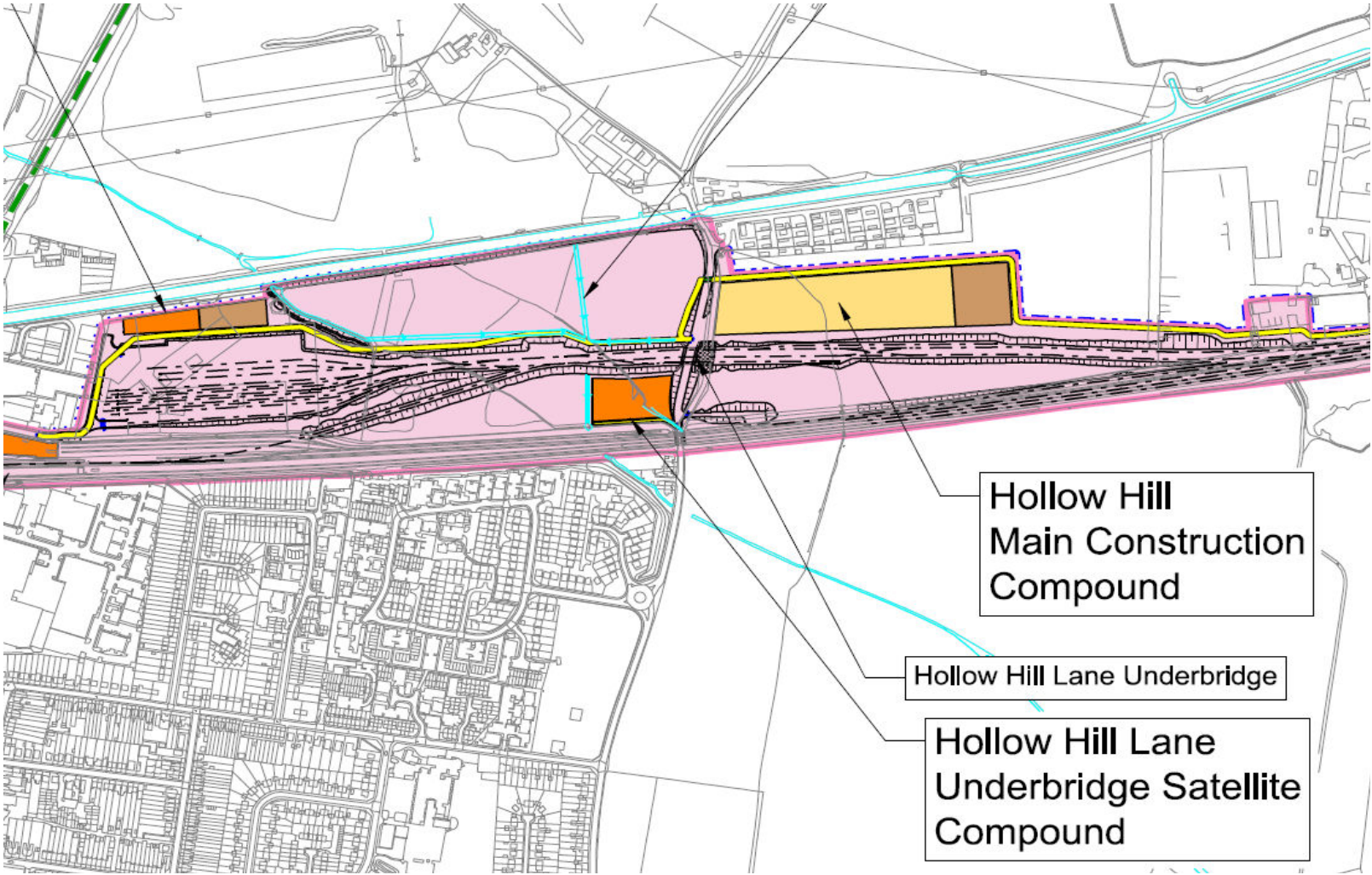


Hollow Hill Lane



Market Lane

Site compound



Obtaining powers to do works

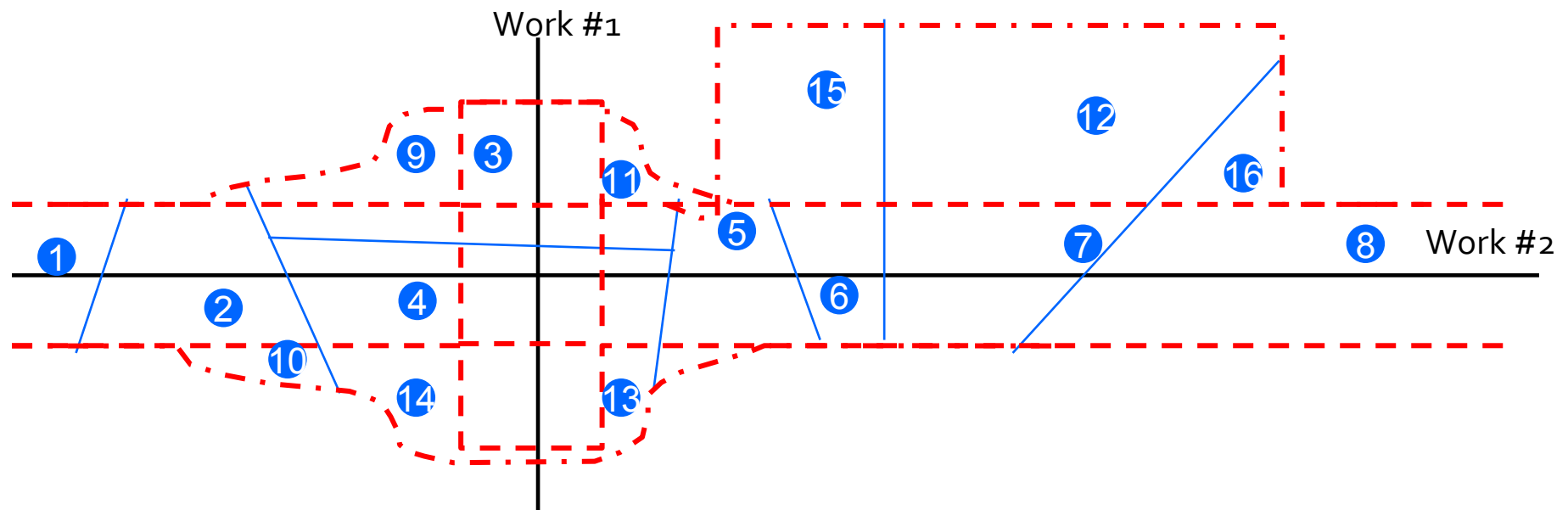
- Powers to undertake the works will be sought by an Additional Provision to the HS2 Bill.
- The HS2 Bill contains the powers that will be granted and includes:
 - Powers to Acquire, temporarily occupy, obtain rights over land
 - Powers to Interfere with highways – temporary and permanent stopping up, diversion
 - Powers to Interfere with, divert utilities
 - The granting of deemed planning permission for Scheduled Works and Clause 2 works
 - The disapplication of other legislation (e.g. Display Listed Building, Ancient Monument, Burial grounds, Tree legislation, Some relating to Water Resource/Flood Risk Consents)
 - Requirement on Nominated Undertaker to obtain consents under the Act (Planning Conditions, Highways Consents, Protective Provisions etc.)

Bill documents

- The Bill itself
- Plans and Sections
- Estimate of Expense
- Book of Reference
- Supporting documentation:
 - Environmental Statement (including Code of Construction Practice)
 - Additional documents (e.g. consultation report)
- Rules for preparing and promoting Private and Hybrid bills are set out in Parliamentary Standing Orders.

Plans

- The Plans are a distillation of the design into the Parliamentary Plans, showing Works, Limits and land Parcels



METROPOLITAN BOROUGH OF SOLIHULL PLAN

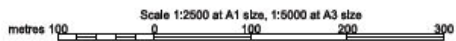
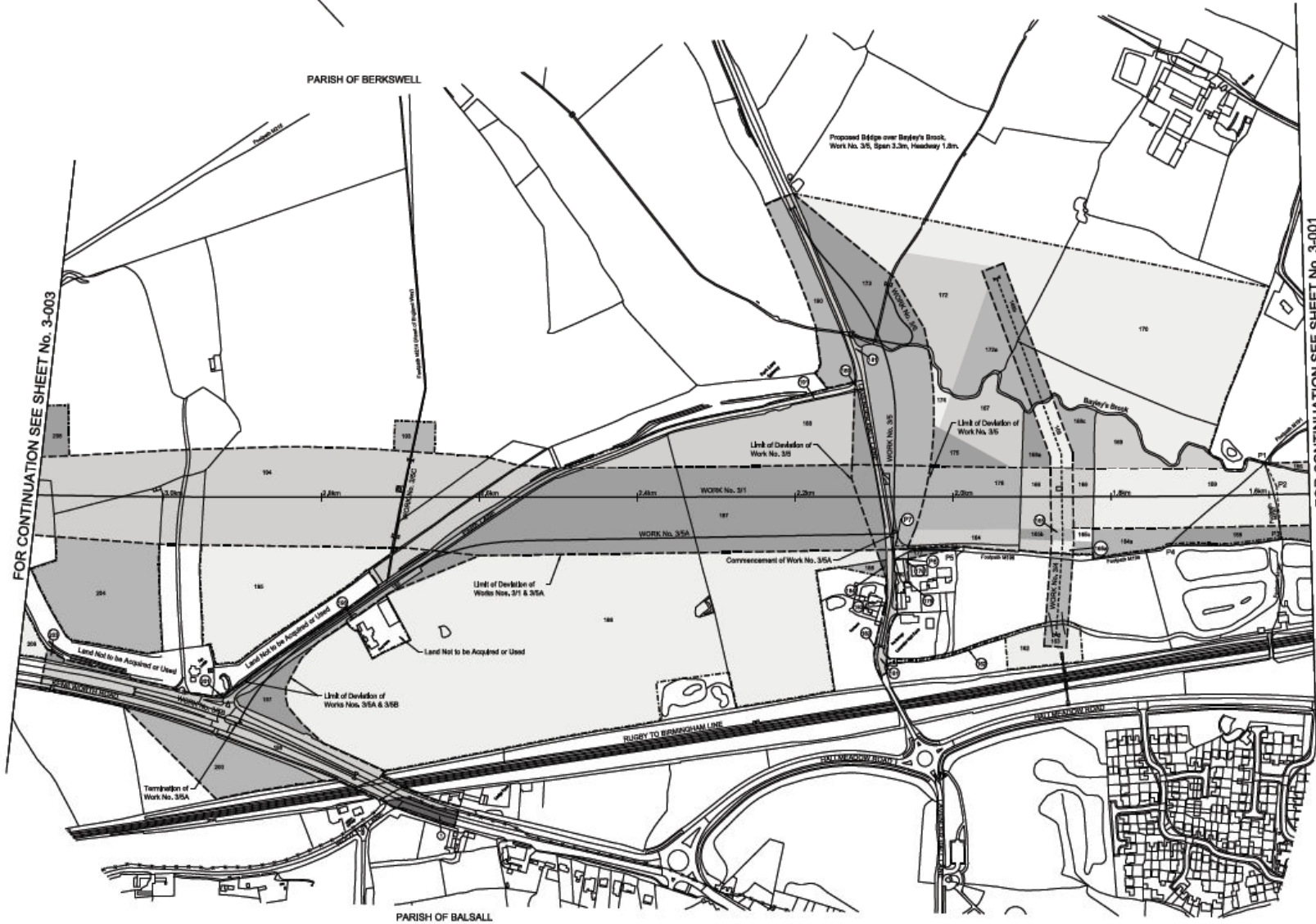
SHEET No. 3-002

IN PARLIAMENT • SESSION 2015-14
HIGH SPEED RAIL
(LONDON • WEST MIDLANDS)
Work No. 3/1 (Railway)
Work No. 3/4 (Water Main)
Works Nos. 3/5, 3/5A, 3/5B (Roads)
Work No. 3/5C (Footbridge)
Work No. 3/6 (Watercourse)

For Section of Work No. 3/1 see Sheet No. 6-001
For Section of Work No. 3/4 see Sheet No. 6-003
For Section of Work No. 3/5 see Sheet No. 6-003
For Section of Work No. 3/5A see Sheet No. 6-003
For Section of Work No. 3/5B see Sheet No. 6-003
For Section of Work No. 3/5C see Sheet No. 6-003
For Section of Work No. 3/6 see Sheet No. 6-003

The area enclosed by any line of deviation or by any line of land to be acquired or used is the area extending to the outer edge of the line marking those lines

This map is based upon Ordnance Survey material with the permission of Ordnance Survey on behalf of the Controller of Her Majesty's Stationery Office Crown Copyright. Unauthorised reproduction infringes Crown Copyright and may lead to prosecution or civil proceedings (Ordnance Survey Licence 10046193)



Drawing No. C224-ARP-HY-DPL-040-220500 Rev HB01

Environmental Assessment

The Additional Provision will be accompanied by an Environmental Statement that will assess the following topics:

- Agriculture and soils
- Air quality
- Community
- Cultural heritage
- Ecology
- Landscape and visual
- Socio-economics
- Sound and noise
- Traffic and transport
- Waste and materials (route-wide)
- Water resources

Structure of Environmental Statement

Non-technical summary (NTS)

This is a summary of the Phase One project and its likely significant residual effects on the environment. You may find this a useful place to start.

Volume 1: An introduction to the ES

Volume 1 is an overview of the Bill and the environmental impact assessment (EIA) process.

Volume 3: Route-wide effects

Volume 3 sets out the likely significant environmental effects that were considered on a wider scale.

Volume 4: Off-route effects

Volume 4 examines any likely significant environmental effects at locations beyond the Phase One route corridor and its local environment.

Volume 2: Community Forum Area reports

Volume 2 consists of 26 reports and their associated map books. Details of each Community Forum Area (CFA) are below.

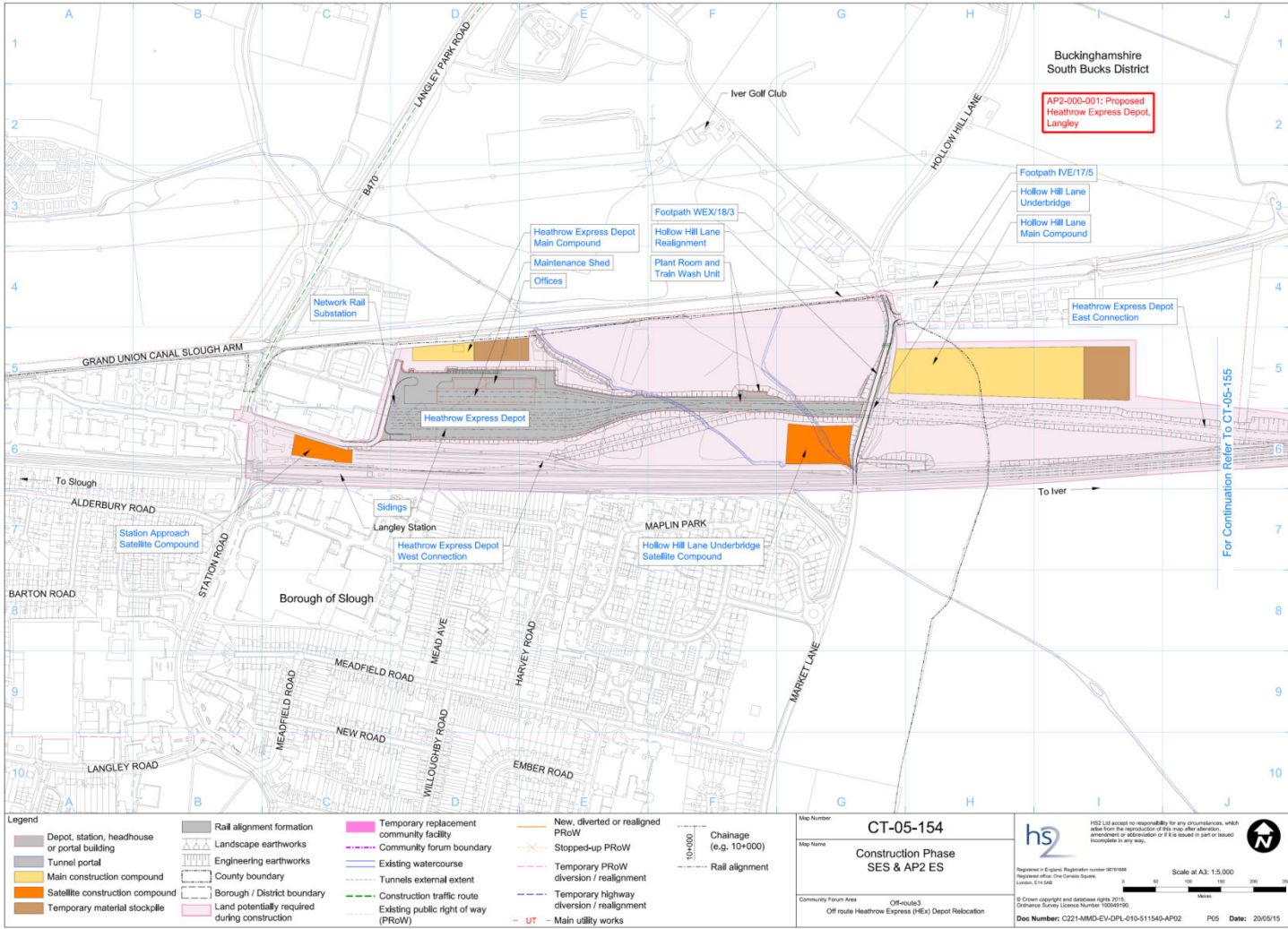
CFA1 Map EUSTON STATION & APPROACH CFA1 Report	CFA2 Map CAMDEN TOWN AND HS1 LINK CFA2 Report	CFA3 Map PRIMROSE HILL TO KILBURN (CAMDEN) CFA3 Report	CFA4 Map KILBURN (BRENT) TO OLD OAK COMMON CFA4 Report	CFA5 Map NORTHOLT CORRIDOR CFA5 Report	CFA6 Map SOUTH RUISLIP TO ICKENHAM CFA6 Report	CFA7 Map COLNE VALLEY CFA7 Report	CFA8 Map THE CHALFONTS AND AMERSHAM CFA8 Report	CFA9 Map CENTRAL CHILTERN CFA9 Report	CFA10 Map DUNSMORE, WENDOVER AND HALTON CFA10 Report	CFA11 Map STOKE MANDEVILLE AND AYLESBURY CFA11 Report	CFA12 Map WADDESDON AND QUAINTON CFA12 Report	CFA13 Map CALVERT, STEEPLE CLAYDON, TWYFORD & CHETWODE CFA13 Report
CFA14 Map NEWTON PURCELL TO BRACKLEY CFA14 Report	CFA15 Map GREAT WORTH TO LOWER BODDINGTON CFA15 Report	CFA16 Map LADBROKE AND SOUTHAM CFA16 Report	CFA17 Map OFFCHURCH AND CUBBINGTON CFA17 Report	CFA18 Map STONELEIGH, KENILWORTH AND BURTON GREEN CFA18 Report	CFA19 Map COLESHILL JUNCTION CFA19 Report	CFA20 Map CURDWORTH TO MIDDLETON CFA20 Report	CFA21 Map DRAYTON BASSETT, HINTS AND WEEFORD CFA21 Report	CFA22 Map WHITTINGTON TO HANDSACRE CFA22 Report	CFA23 Map BALSALL COMMON AND HAMPTON-IN-ARDEN CFA23 Report	CFA24 Map BIRMINGHAM INTERCHANGE AND CHELMSLEY WOOD CFA24 Report	CFA25 Map CASTLE BROMWICH AND BROMFORD CFA25 Report	CFA26 Map WASHWOOD HEATH TO CURZON STREET CFA26 Report

Volume 5: Appendices and map books

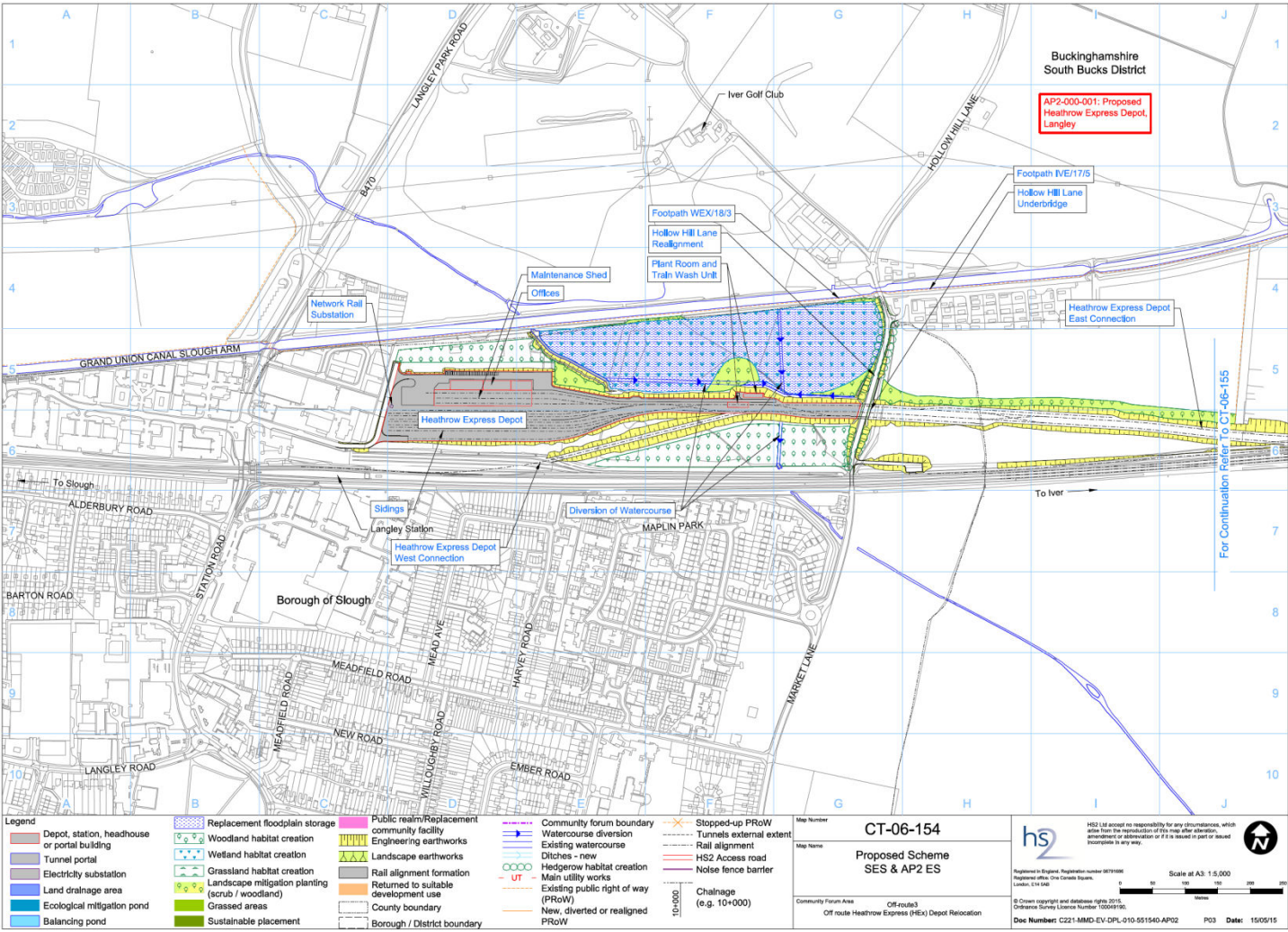
The majority of the appendices in Volume 5 examine certain topics in detail, either within a CFA or more widely. Appendices assessing a particular topic area are identified by the reference codes below. Volume 5 also contains supporting documents, such as the draft Code of Construction Practice.

AGRICULTURE, FORESTRY AND SOILS AG	AIR QUALITY AQ	COMMUNITY CM	CULTURAL HERITAGE CH	ECOLOGY EC	ELECTROMAGNETIC INTERFERENCE EM	LAND QUALITY LQ	LANDSCAPE AND VISUAL ASSESSMENT LV	SOCIO-ECONOMICS SE	SOUND, NOISE AND VIBRATION SV	TRAFFIC AND TRANSPORT TR	WASTE AND MATERIAL RESOURCES WM	WATER RESOURCES AND FLOOD RISK ASSESSMENT WR
---------------------------------------	-------------------	-----------------	-------------------------	---------------	------------------------------------	--------------------	---------------------------------------	-----------------------	----------------------------------	-----------------------------	------------------------------------	---

Environmental Statement – drawings



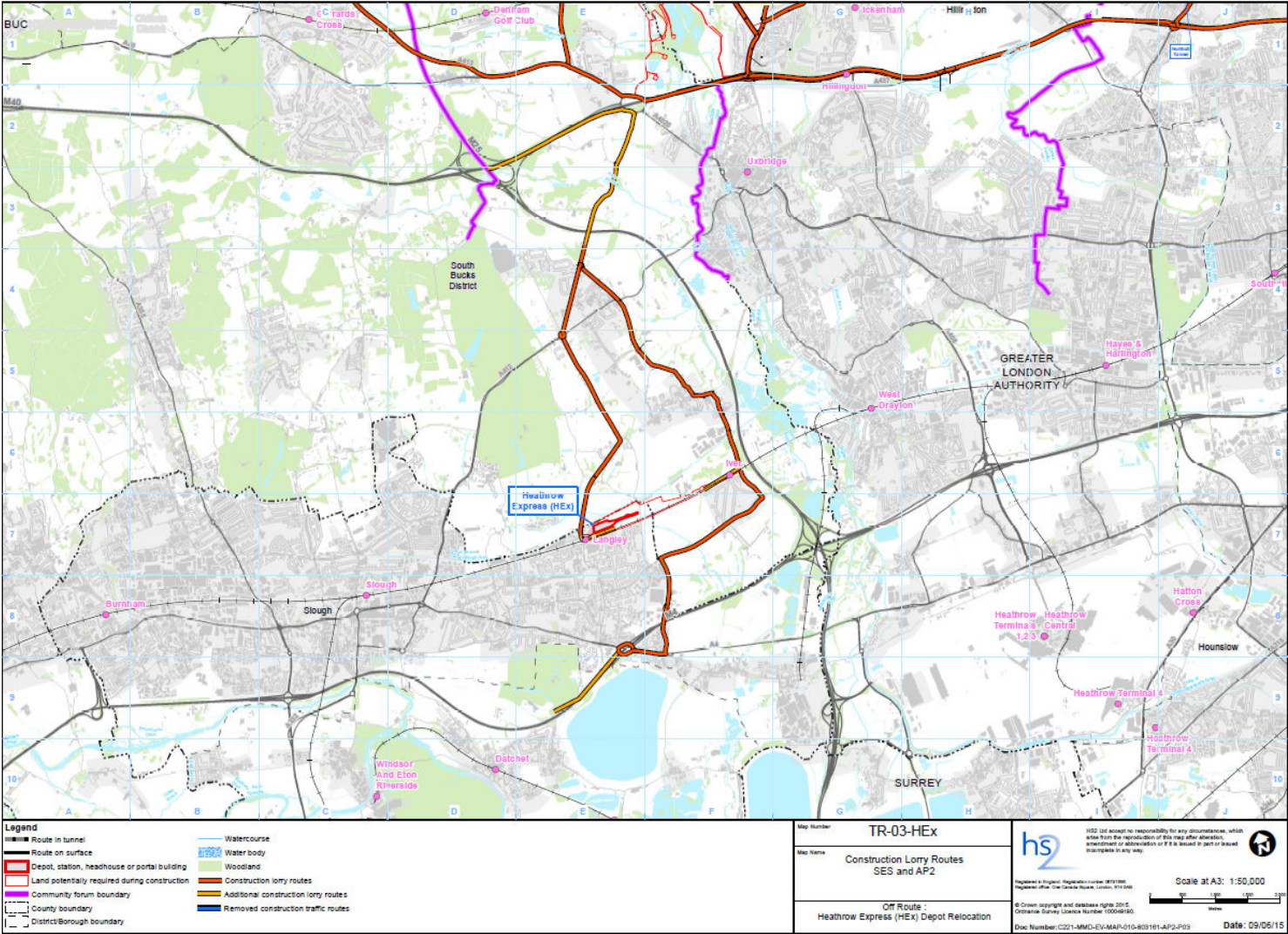
Environmental Statement – drawings



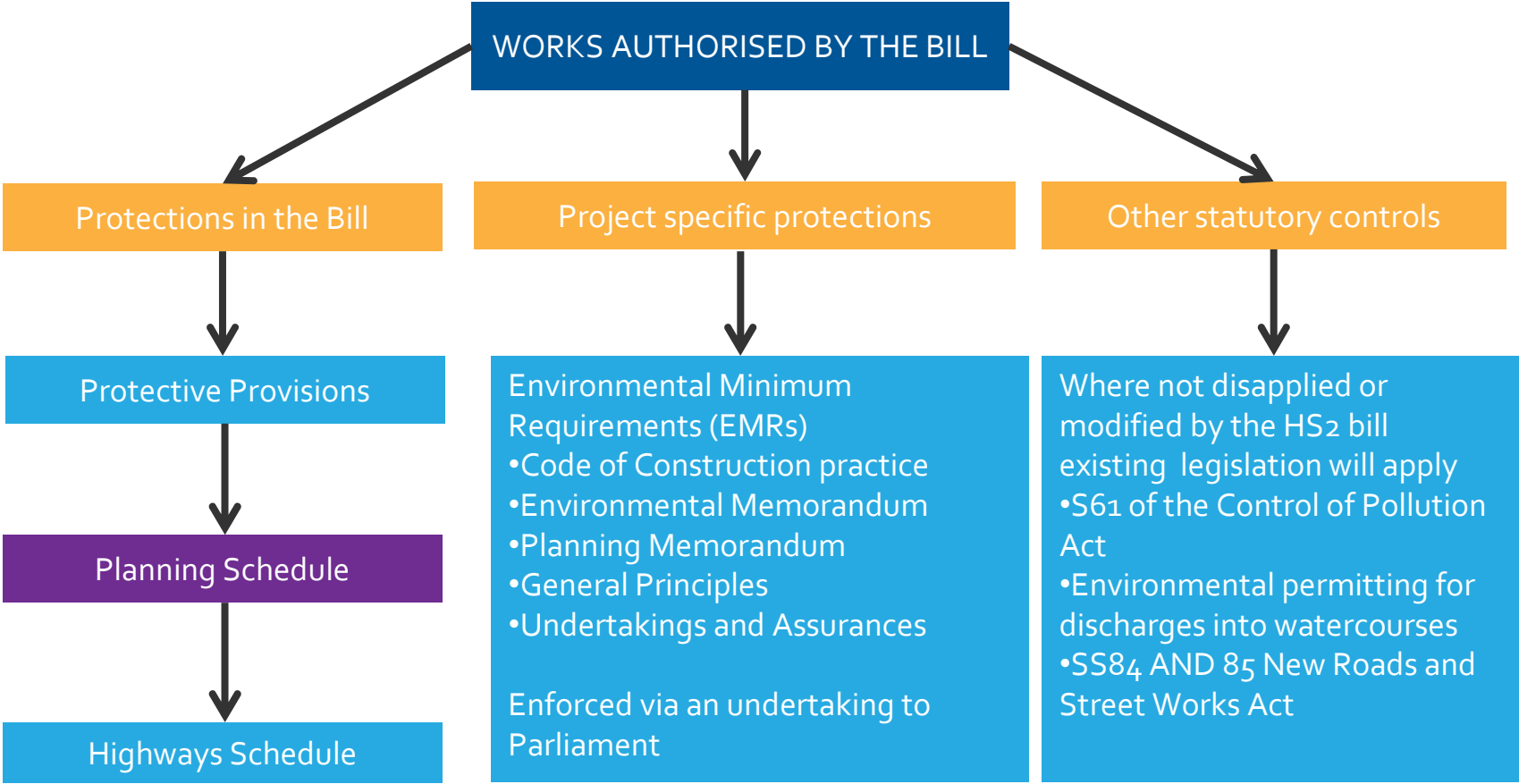
Road networks

- Construction compounds will provide the interface between the construction works and the public highway.
- Proposed site access routes to these compounds will be described in the Environmental Statement and identified on the associated mapping.
- Three potential routes have provided the basis of the assessment (shown on maps on next slides).

Road network



Controls in place on HS2



Petitioners

- Anyone 'directly and specially affected' by the Bill can petition
- Petitioning period will be a Parliamentary decision following the deposit of Additional Provision

Information events

- Langley
Saturday 13 June - 2pm to 6pm
Langley Leisure Centre
Saturday 20 June - 11am to 4pm
Langley Academy
- Iver
Wednesday 17 June - 2pm to 8pm
Richings Park Sports Club

Thank you

Any questions?